

USB / CD / Multi Source Player

CD-610U



CD-610U

USB / CD / Multi Source Player

“High Performance at affordable price”

The CD-610U uses high-quality audio DAC chip. Among the supported media are CD, MP3 WMA, WAV and USB. An RS-232 port offers 3rd party remote control capability.





The CD-610U uses high-quality audio DAC chip. Among the supported media are CD, MP3 WMA, WAV and USB. An RS-232 port offers 3rd party remote control capability.



CD-610U

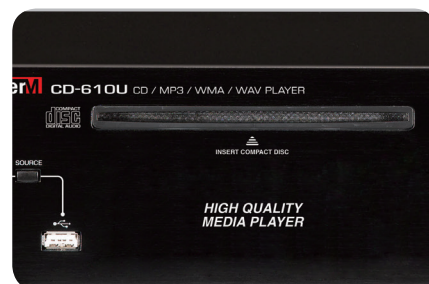
The CD-610U offers high quality playback of multi-format audio on CD, and removable USB Drive. Inter-M raises the quality standard of CD players by using only high-quality DACs and broadcast quality balanced output stages. 3rd party control such as crestron and AMX is possible via RS232 control. The CD-610U is a high-quality yet affordable CD/MP3 player. A 24V DC back up supply connection allows for uninterrupted playback in the event of power failure.

CD-610U

USB / CD / Multi Source Player

CD PLAYER : 3-beam Pick-Up Robust state-of-the-art transport mechanisms

CD-610U uses state of the art anti-shock transport mechanism similar to those used in the automotive industry. Stable skip free CD playback makes the CD-6208 ideal for broadcast and professional venues as well as applications shock free playback is required.



USB Playback

The CD-610U can easily playback file stored on a USB Drive in formats including MP3, WMA and WAV.

[REAR PANEL]



DC 24V

A 24V DC back up supply connection allows for uninterrupted playback in the event of power failure.



SWITCH MODE POWER SUPPLY DESIGN

SMPS power supply design ensures smooth and rich sound reproduction.

VARIOUS FORMAT OUTPUTS

The CD-610U multiple output formats including SPDIF and Optical. Analogue playback outputs are available on stereo un-balanced audio on RCA connectors. A mono summed output is available on an XLR-M connector optimized for mono-environment applications such as BGM.

AMX/Crestron and Inter-M Systems external remote Control

A user –friendly front panel interface combined with RS-232 Control port compatible with AMX, Crestron, Inter-m Systems and other 3rd party controllers capabilities provide exceptional control and ease of use

FIRMWARE UPDATE

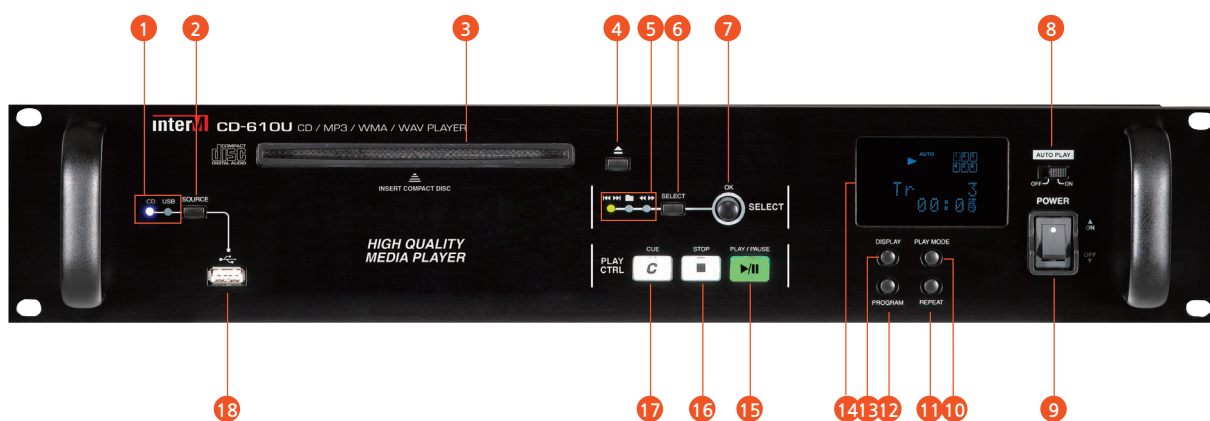
The CD-610U comes complete with feature rich performance. New features can be added and upgraded via easy to install Firmware updates. Firmware can be updated be downloaded from the inter-m's website as they become available. Performance can be sustained.



CD-610U

USB / CD / Multi Source Player

FRONT / REAR PANEL



- | | | | | |
|----------------------------|--------------------|-------------------|-------------------|--------|
| 1 SOURCE SELECTION LED | 5 SELECT LED | 9 POWER SWITCH | 13 DISPLAY BUTTON | 17 CUE |
| 2 SOURCE SELECTION | 6 SELECT BUTTON | 10 PLAY MODE | 14 DISPLAY | 18 USB |
| 3 MEMORY DISK INSTANT PLAY | 7 ENCODER SWITCH | 11 REPEAT BUTTON | 15 PLAY/PAUSE | |
| 4 EJECT BUTTON | 8 AUTO PLAY SWITCH | 12 PROGRAM BUTTON | 16 STOP | |



- | | | |
|---------------------------|----------------------|---------------------|
| 1 AC INLET | 3 DC INPUT | 5 RCA OUTPUT SOCKET |
| 2 RS-232 INTERFACE SOCKET | 4 MONO OUTPUT SOCKET | |



■ INTER-M CD Player Line-up

CDR-01



- SD Recorder
- SD Memory Player
- Auto Play
- Multifunction encoders
- Sound quality-driven circuit design
- HiFi headphone Monitoring
- AES / EBU output support
- High operating reliability
- 3rd party serial remote control
AMX / CRESTRON / INTER-M
- Dimension and Weight
482(W) x 88(H) x 280(D)mm / 19(W)x3.5(H)x11(D) in / 5.3kg / 11.7lb
- Virtual Disk
- Instant Play
- Pitch
- CUE

CD-6208

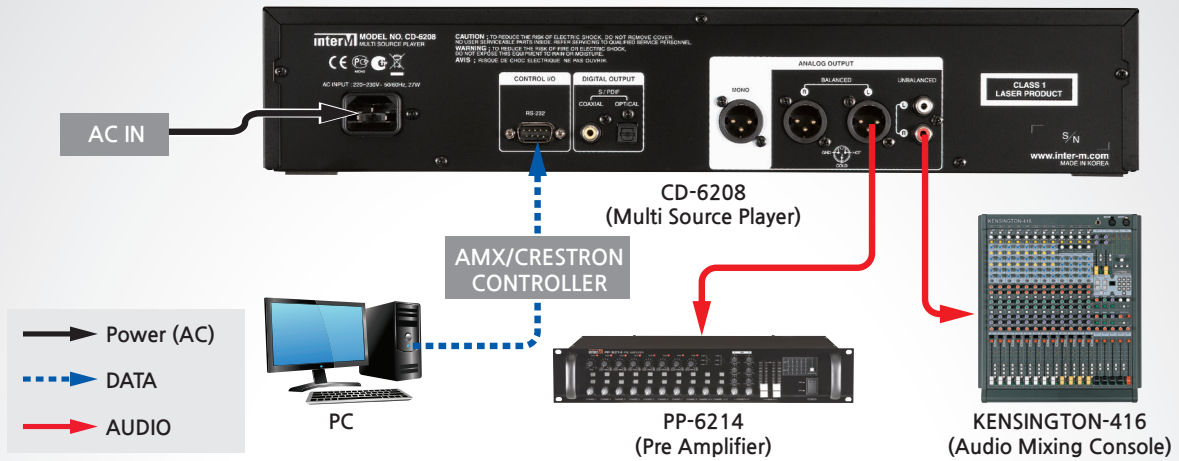


- Memory virtual play
- INSTANT PLAY
- AUTO PLAY on power on
- PITCH CONTROL
- CUE
- Multifunction encoders
- Sound quality-driven circuit design
- High operating reliability
- AMX/CRESTRON/INTER-M compatibility
- Plays a variety of media type
- Support firmware update
- Dimension and Weight:
482(W) x 88(H) x 280(D)mm / 19(W)x3.5(H)x11(D) in / 5.3kg / 11.7lb

■ Inter-M CD Player Comparison

	Source			Function				
	USB	SD CARD	DC 24V	CD > MEMORY COPY	USB > MEMORY COPY	AUDIO REC TO MEMORY	AES/EBU CONNECTOR	HEAD PHONE OUTPUT
CDR-01	O	O	X	X	X	O	O	O
CD-6208	O	O	X	O	O	X	X	X
CD-610U	O	X	O	X	X	X	X	X

Applications



Specification

DISC	12cm
Number of channels	3 channels (L, R, Mono)
Frequency Response (20Hz~20kHz)	+0.5/-2.0dB
T.H.D. (20kHz LPF)	Less than 0.01% (Nor), 0.03% (Lim)
S/N (20kHz LPF, A-WTD)	Better than 84dB (Nor), 80dB (Lim)
Analog Output Level (Max)	+6dBV±2dB (2Vrms)
Analog Output Connectors	RCA: L/R, XLR:MONO
Formats	Audio CD (CD-DA), MP3, WMA
Operation Temperature	-10°C ~ +40°C / 14°F ~ 104°F
Power Source	USA/CANADA 120VAC, 60Hz / DC 24V UK/Europe 230VAC, 50Hz / DC 24V Australia 240VAC, 50Hz / DC 24V
Power Consumption	12W
Weight (SET)	4.7kg / 10.4lb
Dimensions (SET)	482(W) x 88(H) x 280(D)mm / 19.0(W) x 3.46(H) x 11.02(D) in

Dimension

